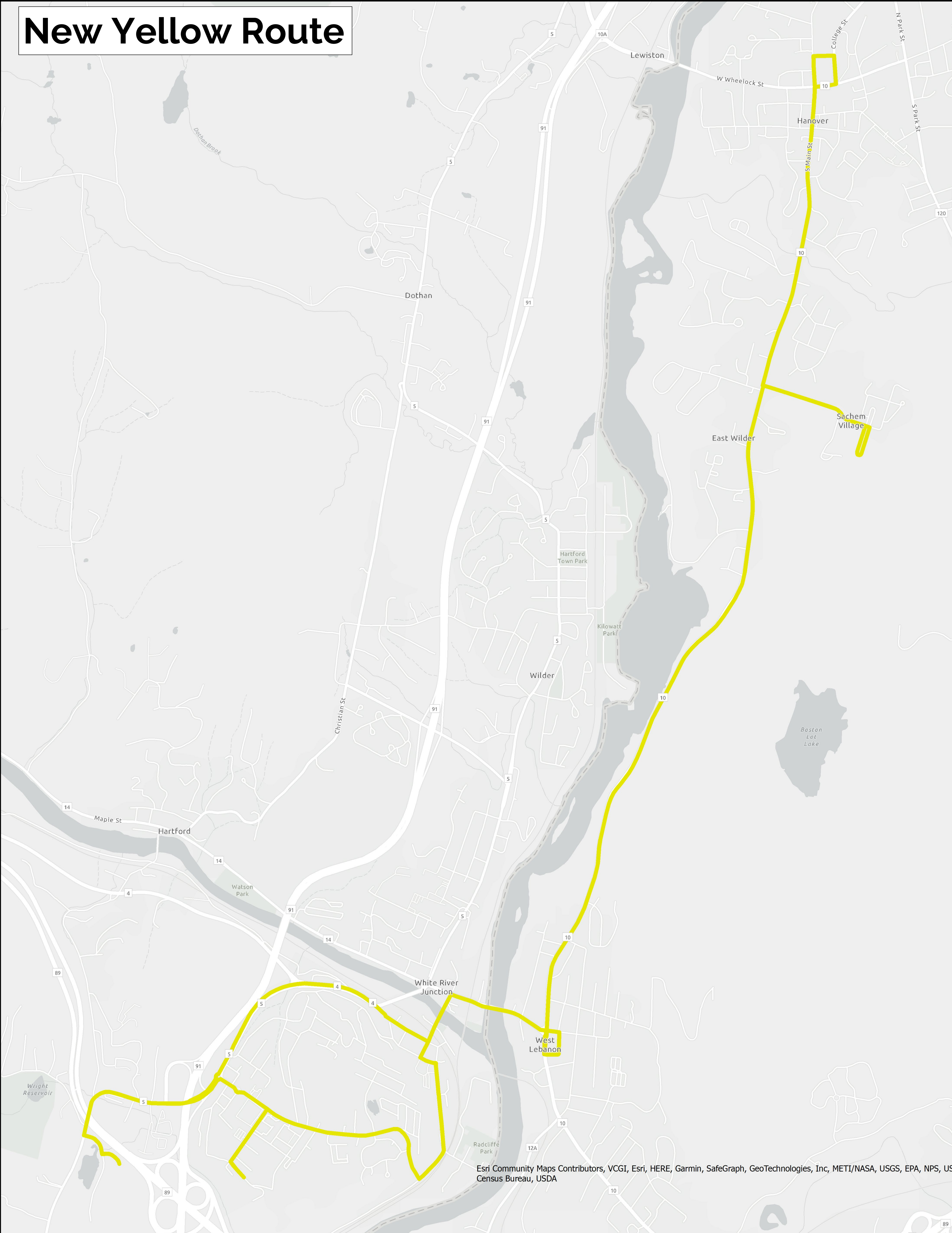
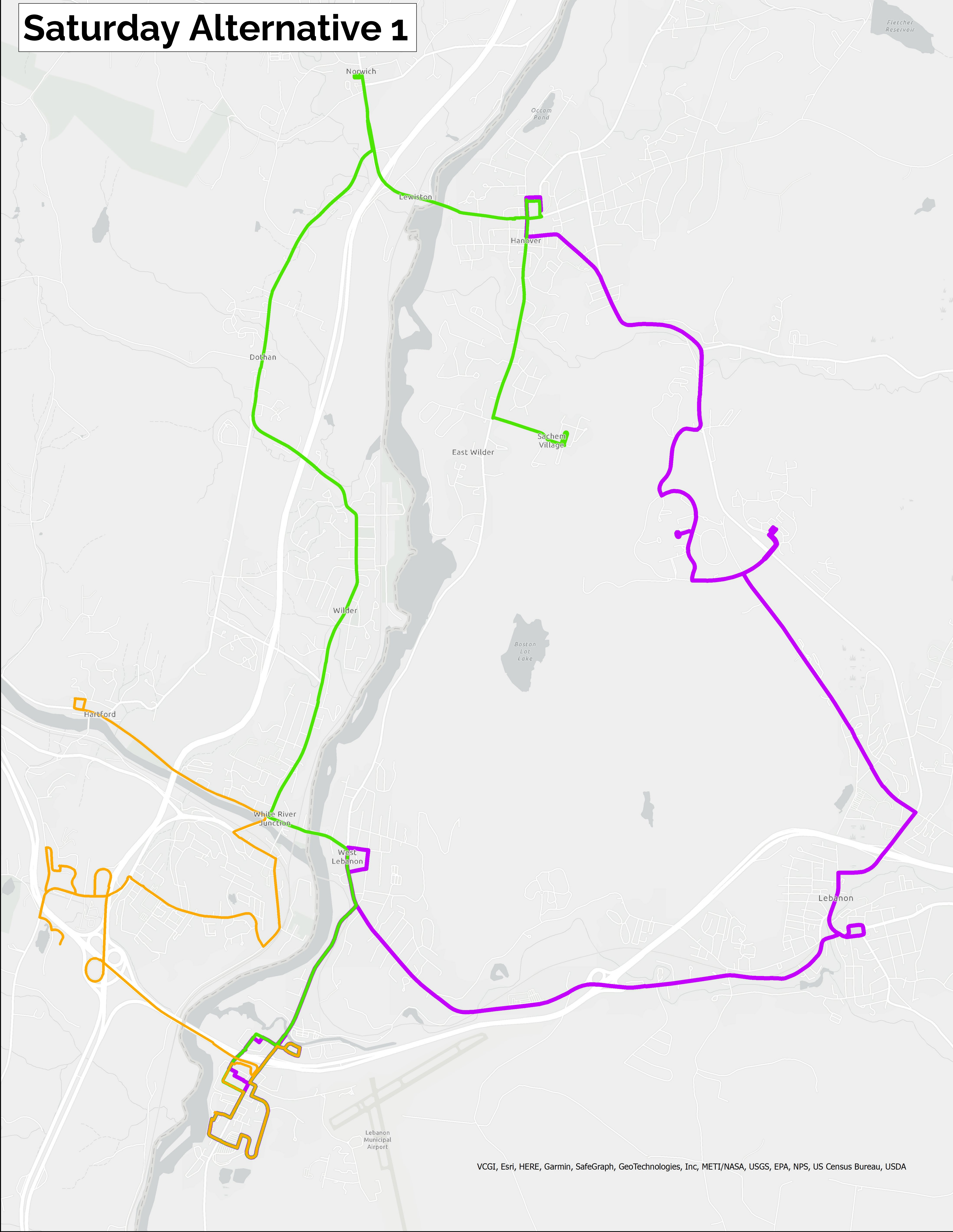


New Yellow Route



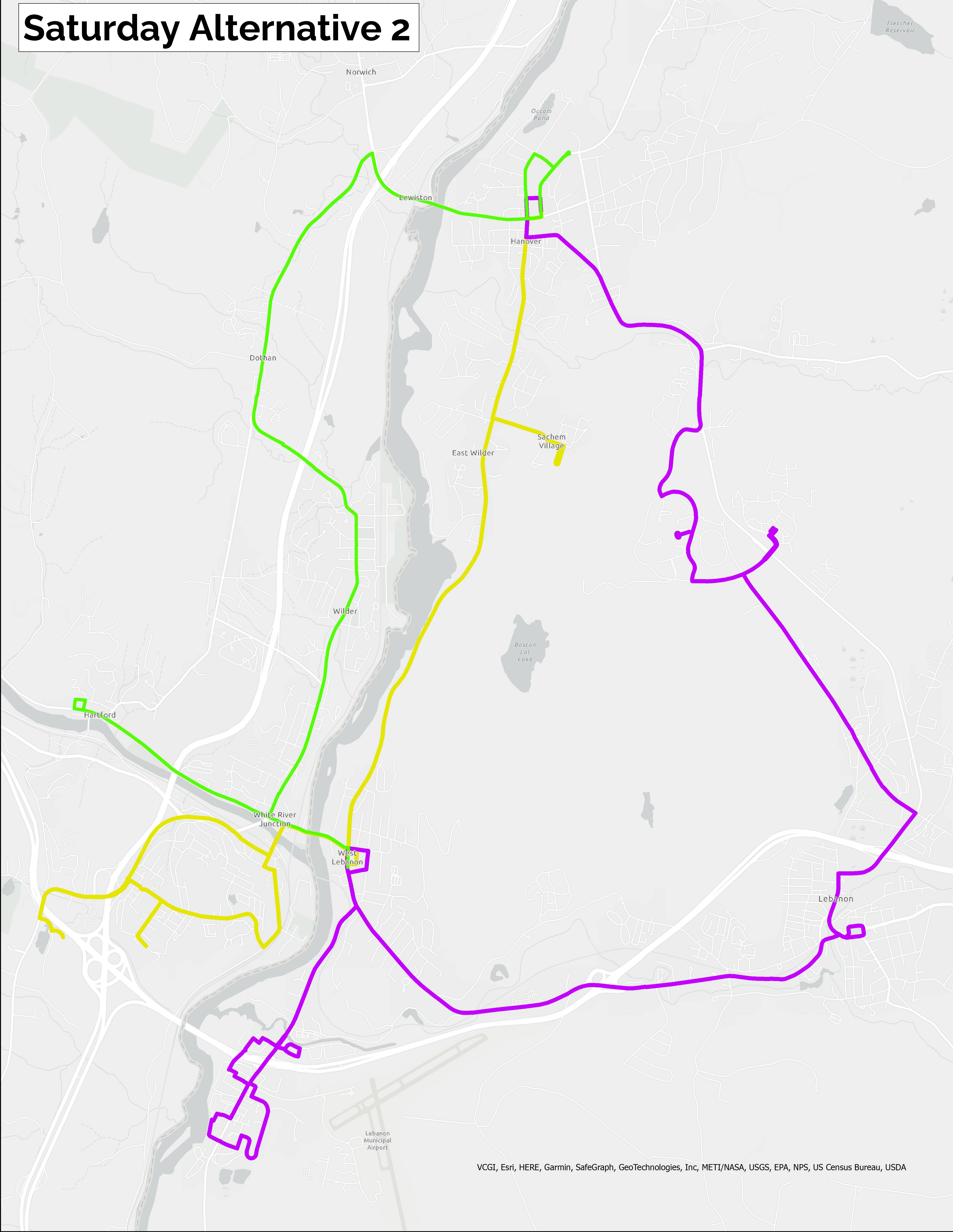
- **Replaces unproductive service to Bugbee Street with enhanced service north of Kilton**
 - All White River Junction passengers (Orange or Yellow) will have one-seat ride to Hanover
 - Morning northbound and afternoon southbound diversion to Sachem Village eliminates long walks for riders
 - Service to Gilman Center and Upper Valley Aquatic Center extended through day (currently peak only)
- **Advantages**
 - Effectively improves Orange route service to every 30 minutes
 - Major increase in convenience for Sachem Village residents
- **Disadvantage**
 - Diversion to Sachem Village adds 4 minutes to trip for through-riders from Kilton to Hanover

Saturday Alternative 1



- **Three routes running once per hour from 8:00 AM to 6:00 PM**
 - Combination of Red and Blue routes running from Hanover to Plazas via Lebanon
 - Extended version of Green route running from Sachem Village to Plazas via Norwich and Wilder
 - Alternative version of Orange route running from Hartford Village to Plazas via White River Junction
- **Advantages**
 - One-seat rides for all passengers to shopping areas at the West Lebanon Plazas
 - Transfers possible to reach other destinations
- **Disadvantage**
 - Route structure in Vermont different from weekday service; could be confusing at first

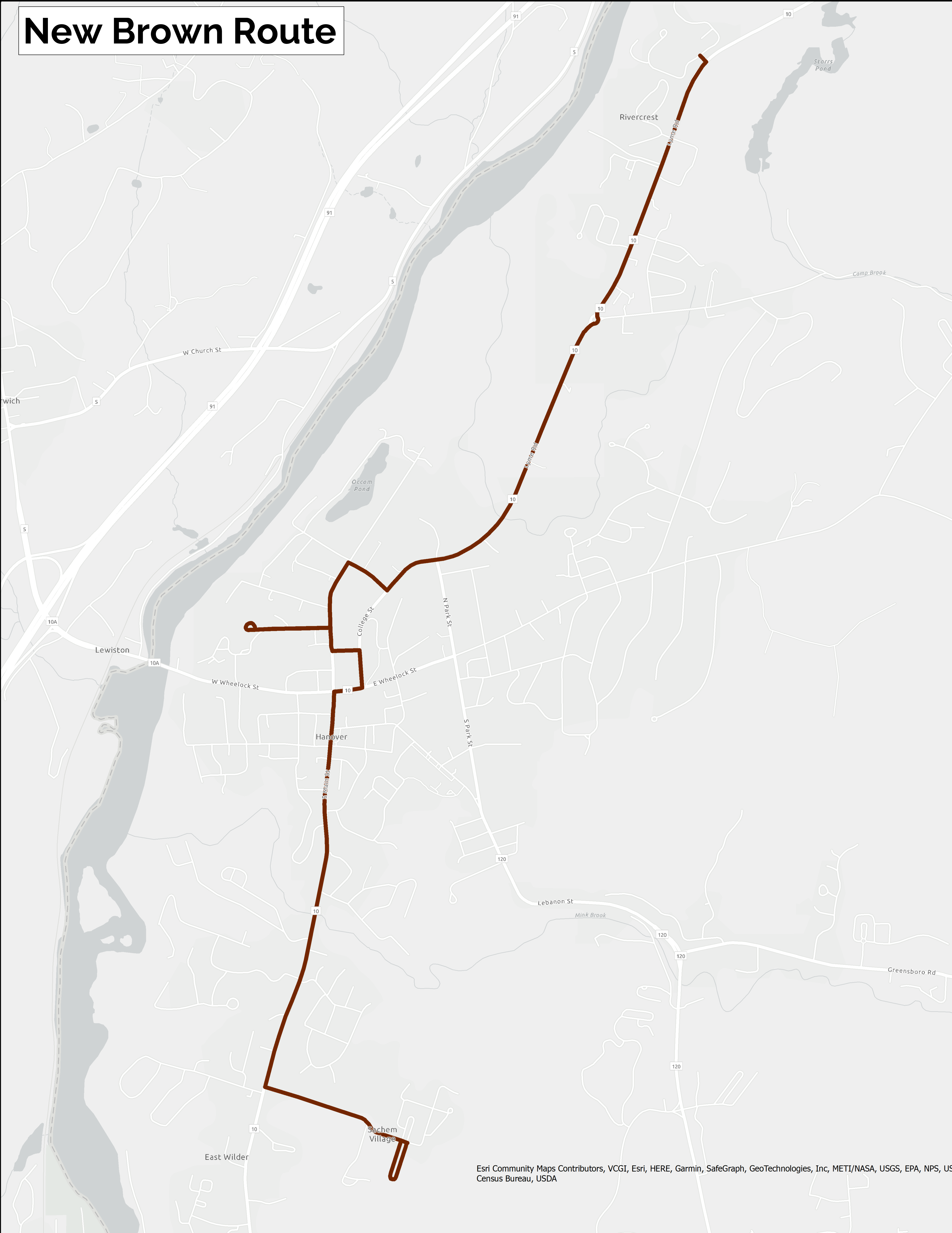
Saturday Alternative 2



VCGI, Esri, HERE, Garmin, SafeGraph, GeoTechnologies, Inc, METI/NASA, USGS, EPA, NPS, US Census Bureau, USDA

- **Three routes running once per hour from 8:00 AM to 6:00 PM**
 - Combination of Red and Blue routes running from Hanover to Plazas via Lebanon
 - Green route running from Hanover to Kilton Library via Hartford Village
 - New Yellow route running from White River Junction to Hanover via Sachem Village
- **Advantage**
 - Very similar to weekday route structure
- **Disadvantages**
 - Vermont and Sachem Village passengers need to transfer at Kilton to reach West Lebanon plazas
 - Not possible to coordinate transfers among all routes in both directions; significant waits for some passengers

New Brown Route

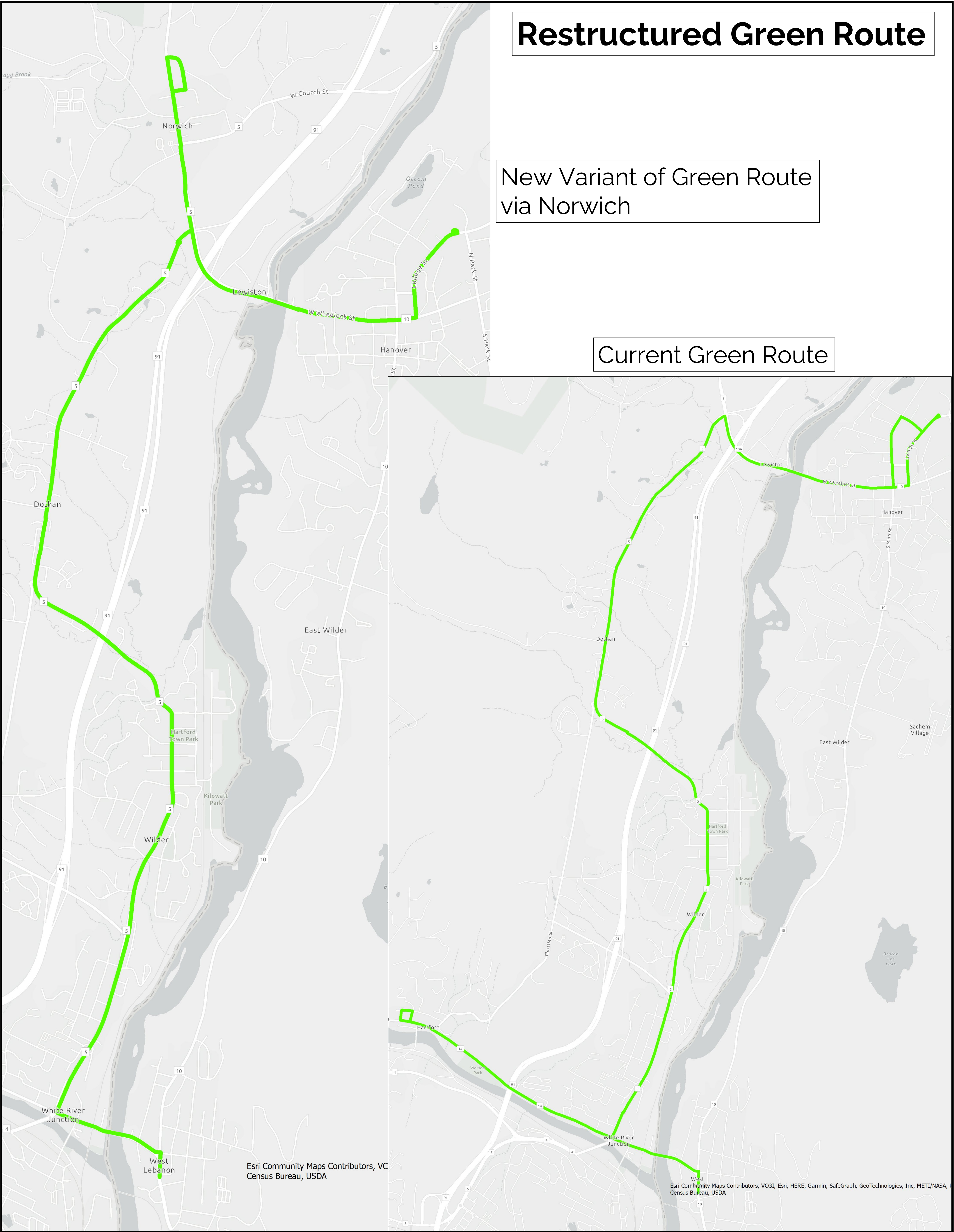


- **Hanover portion of current Brown route connected to Sachem Village every 30 minutes**
 - Norwich portion of current Brown route would be covered by altered Green route
- **Advantages**
 - Direct, all-day connection between Sachem Village and main campus/Tuck School
 - Will allow for enhanced service to area north of campus as new student housing comes on line
- **Disadvantage**
 - Breaks connection between Norwich and Lyme Road (CRREL and Middle School), but that connection can be maintained by future microtransit (on-demand) service

Restructured Green Route

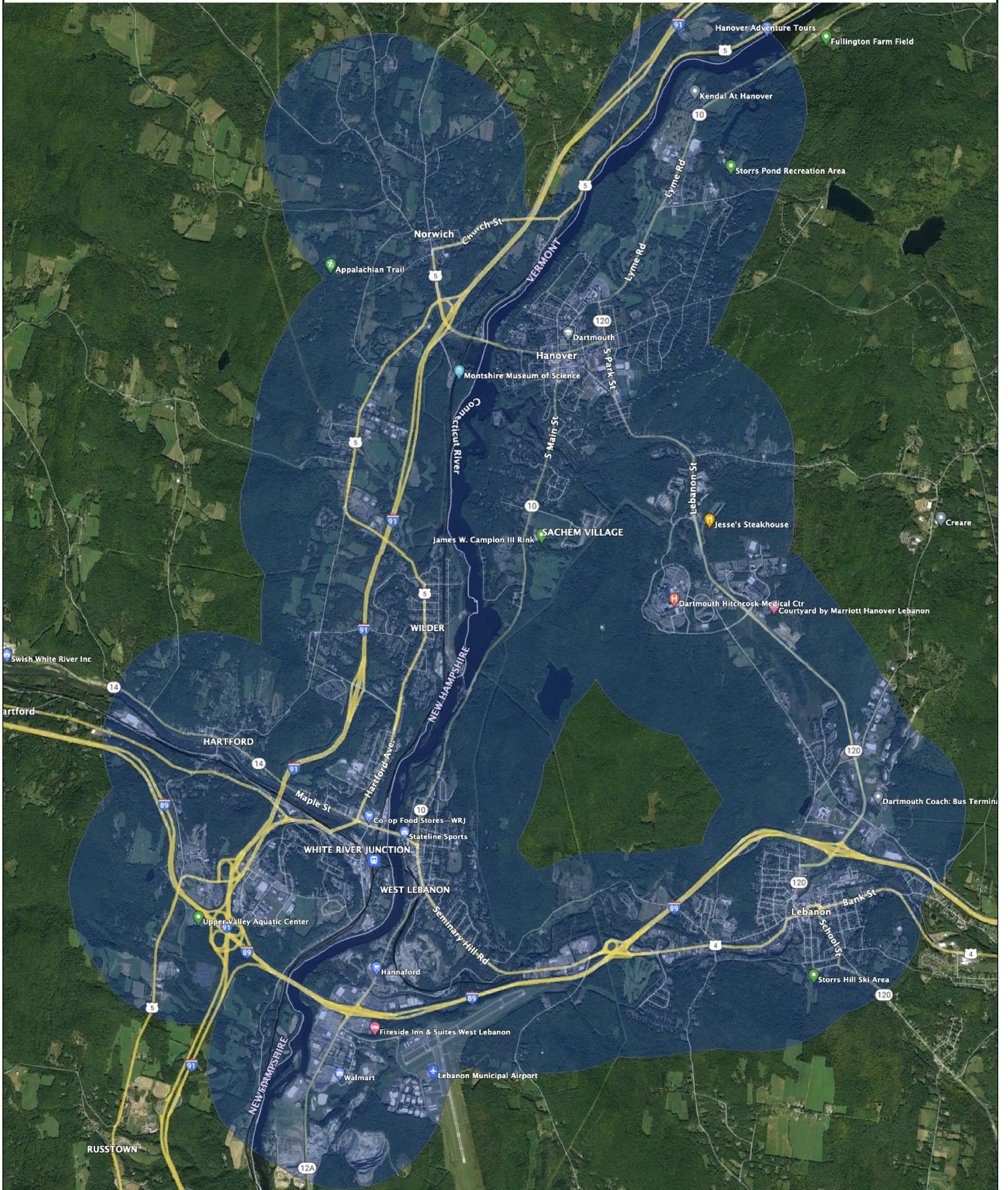
New Variant of Green Route
via Norwich

Current Green Route



- **Two variants of Green route, each running hourly**
 - Trips from Kilton Library would alternate between serving Hartford Village and Norwich Village
 - Most of the route and schedule remains the same as current service
 - Diversion to Norwich replaces the portion of the Brown route
- **Advantages**
 - New one-seat ride from Norwich to Wilder and Kilton Library
- **Disadvantages**
 - Loop to Norwich Park & Ride eliminated (about 1 rider per day)
 - Service to Dan & Whit's reduced from every 40 minutes to every 60 minutes (fewer than 15 riders per day)

Microtransit Service Zone



- **Microtransit is a developing mode of public transit service**
 - Enabled by smartphone technology
 - On-demand service similar to Uber or Lyft but with shared rides
- **Potential AT Flex service**
 - Subsumes ADA paratransit into general microtransit service
 - Integrates ADA passengers with general public and makes better use of resources
 - Allows for more one-seat rides (maintains Norwich–Lyme Rd connection)
 - Expands coverage to areas not served by fixed routes such as Centerra and APD Hospital
 - Non-ADA-eligible passengers could be charged a fare since it is premium door-to-door service

Other Proposed Changes

- Expand Weekday Evening Service
 - Operate Blue, Red, Green, and Orange routes two hours later in the evening than current schedule
 - Blue Route until 9:00 p.m.
 - Red Route until 8:30 p.m.
 - Green Route until 8:30 p.m.
 - Orange Route until 8:30 p.m.
- Eliminate Evening Service on Dartmouth/Downtown Shuttle
 - Two hours of additional service on regular routes makes evening shuttle unnecessary
- Reconfigure Canaan/Enfield Service
 - Operate as separate shuttle from Lebanon City Hall to Canaan rather than as part of the Blue Route
 - Could operate 4 trips per peak period at a lower cost than the existing 3
- Expand Service on Red Route
 - Bring second Red Route bus into service at 6:45 a.m. to provide 30-minute service in the morning
 - Further improve service to every 15 minutes through most of the day